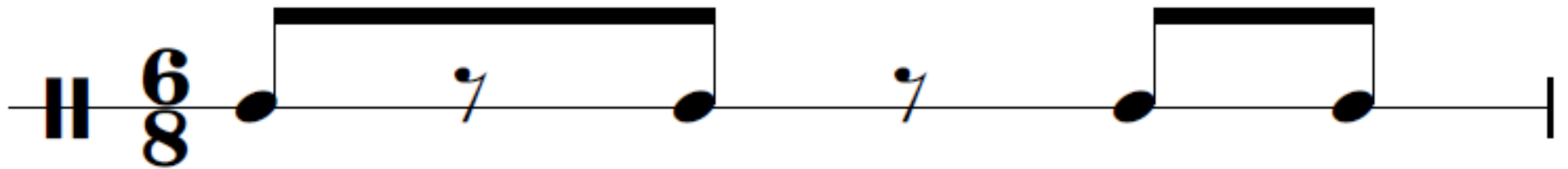
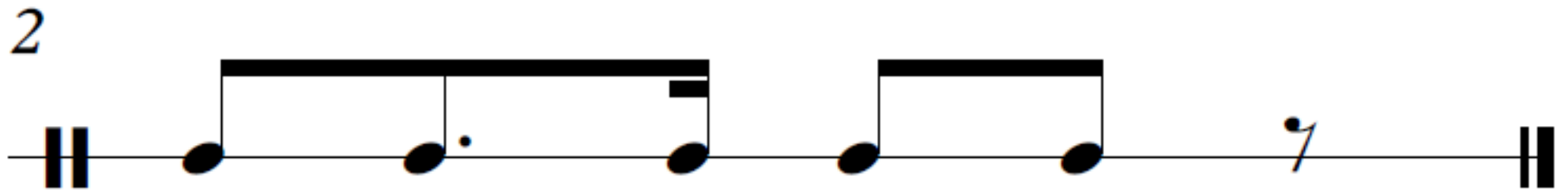


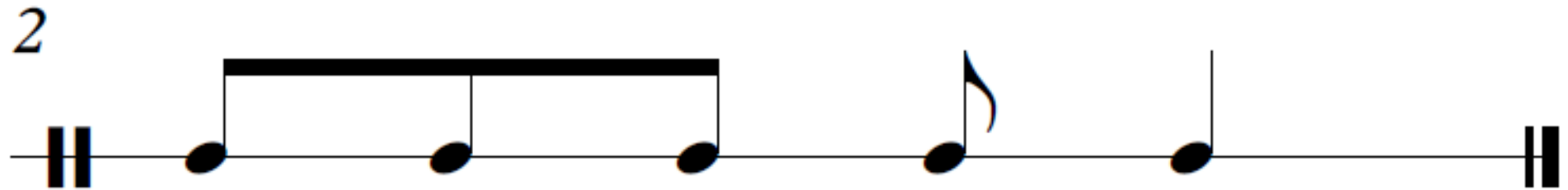
PERCUTA PARA ENTRAR



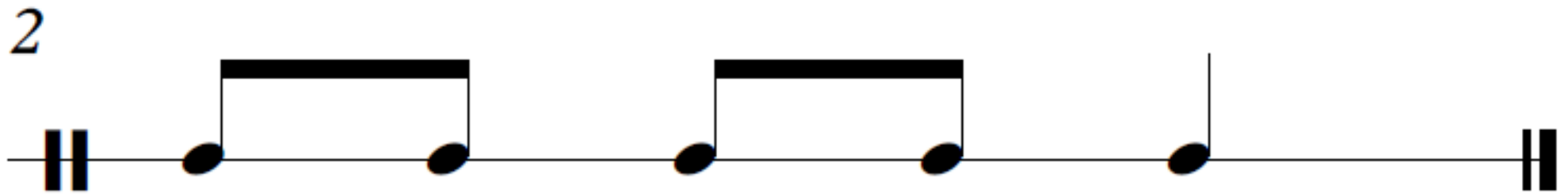
PERCUTA PARA ENTRAR



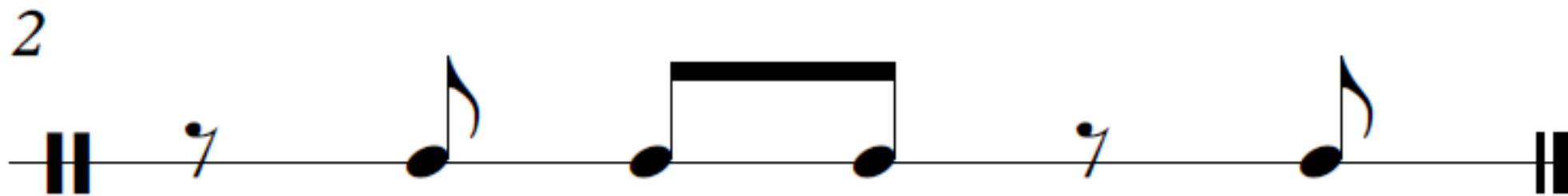
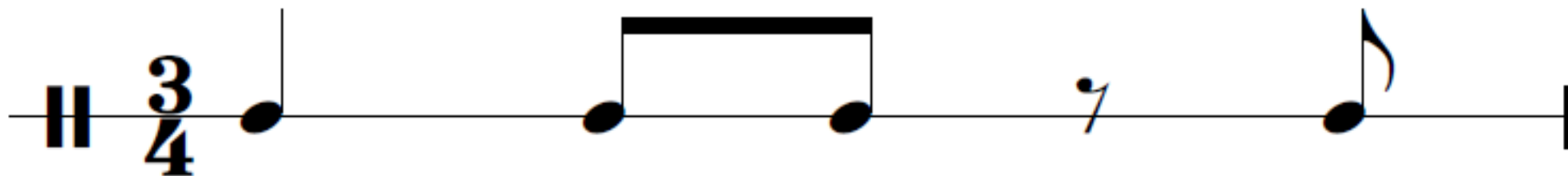
PERCUTA PARA ENTRAR



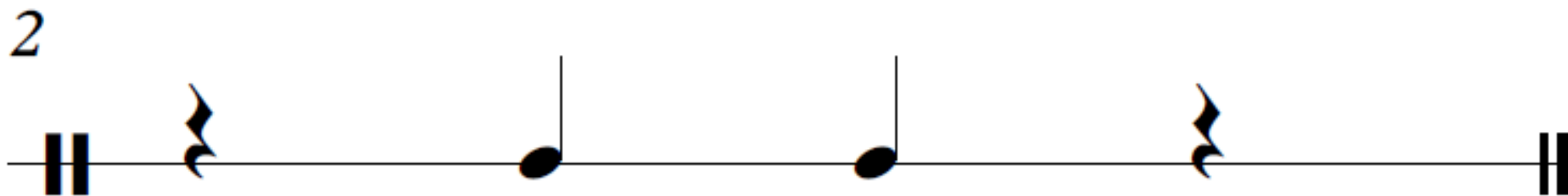
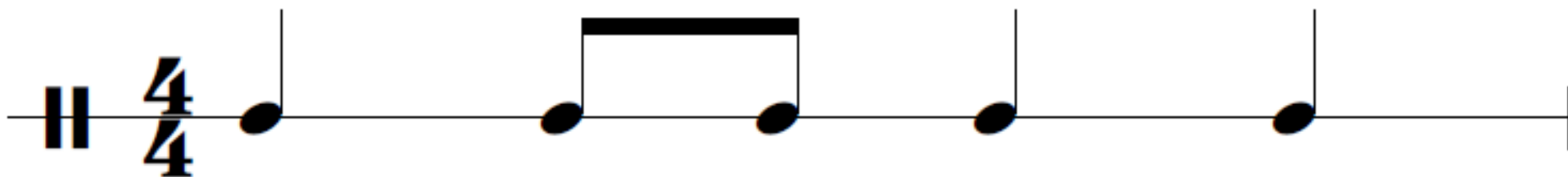
PERCUTA PARA ENTRAR



PERCUTA PARA ENTRAR



PERCUTA PARA ENTRAR



PERCUTA PARA ENTRAR

Mano derecha

Puño izquierdo

The image displays a musical score for a percussive piece titled "PERCUTA PARA ENTRAR". It consists of two staves. The top staff is labeled "Mano derecha" (Right Hand) and the bottom staff is labeled "Puño izquierdo" (Left Hand). Both staves are in 4/4 time, as indicated by the time signature. The right hand part begins with a double bar line, followed by a quarter rest, then a quarter note on the second line, another quarter rest, a quarter note on the second line, a beamed eighth-note pair on the second line, and a quarter note on the second line. The left hand part begins with a double bar line, followed by a quarter note on the second line, a quarter note on the second line, a beamed eighth-note pair on the second line, and a quarter note on the second line. Both parts end with a double bar line.